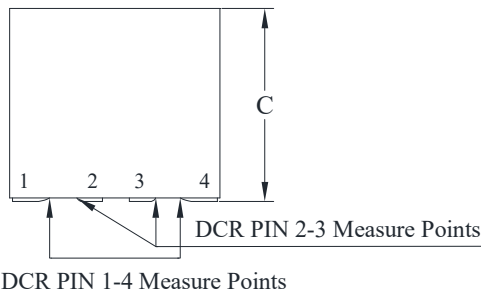
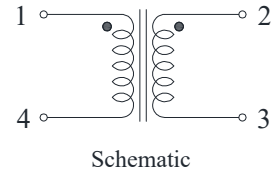
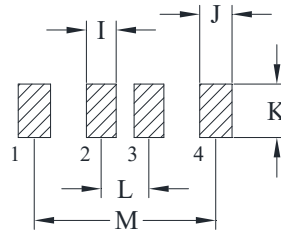
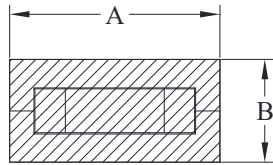


CYNTEC CO., LTD.

乾坤科技股份有限公司

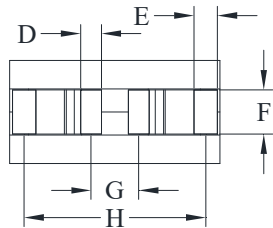
DELTA P/N: TLM1211F Series

Mechanical Dimensions & Schematic



Suggested PWB Layout

- UNIT : mm
- A = 11.7±0.3
 - B = 5.7±0.3
 - C = 10.7+0.4/-0.3
 - D = 1.15±0.3
 - E = 1.3±0.3
 - F = 2.45±0.3
 - G = 2.65±0.5
 - H = 10.1±0.5
 - I = 1.65
 - J = 1.8
 - K = 2.95
 - L = 2.65
 - M = 10.1



Electrical Characteristics @ 25°C, 100kHz, 1V

Delta P/N	L (nH) ± 15%	Li (nH) TYP	DCR (mΩ) ± 10%		Isat ² (A)			Ir ³ (A)	
			1-4	2-3	25°C	100°C	125°C	1-4	2-3
TLM1211F-111	105	84	0.125	0.37	125	106	100	77	45
TLM1211F-121	120	96			102	87	81		
TLM1211F-151	150	120			84	71	67		
TLM1211F-171	170	136			70	60	56		
TLM1211F-201	200	160			58	50	46		

1. 2*Lk is two times of leakage inductance (L(1-2)@3,4 short).
2. Isat is the DC current which causes the inductance drop to Li.
3. Ir is the DC current which causes the surface temperature of the part increase approximately 40 °C.
4. Operating temperature: -40°C to 125°C (Self-temperature rise included).